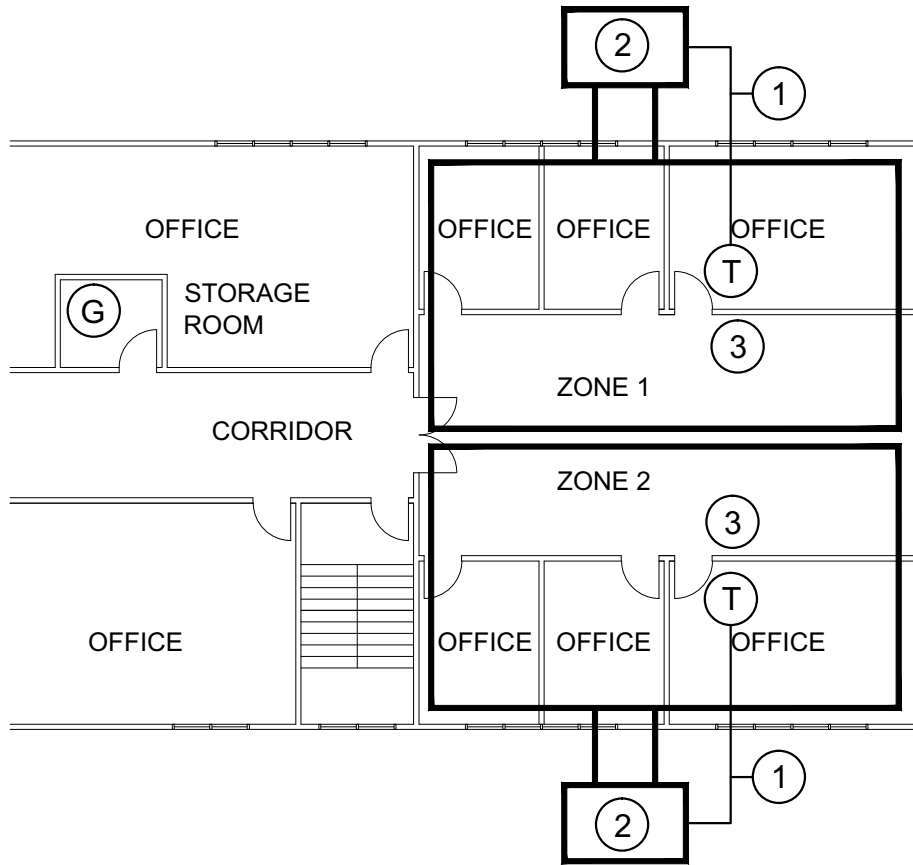




Sample Office - Diagram 501

Multiple HVAC units serving a single suite



- G** New FOUNTEN Wireless Gateway (Part No. FS-GATEWAY) - recommend one per building. Unit has 100 to 300 foot maximum wireless range to nearest thermostat depending on building materials. A single Gateway can support up to 2,000 thermostats. Requires 110V electrical outlet and out-bound data connection. Can be located anywhere in building - central location recommended, cannot be surrounded by metal.
- T** New FOUNTEN Thermostat (Part No. FS-STAT-32AC) installed at existing thermostat location. Installation requires one thermostat per HVAC unit. Unit will automatically repeat and route signals from other thermostats (100 to 300 foot maximum range), extending the Gateway's communication range beyond its 100 to 300 foot maximum range - establishing an automatic, self-healing, mesh network.
- 1** Existing wires running from existing HVAC unit to existing thermostat location. Requires cable with minimum of 3 wires.
- 2** Existing HVAC unit and ductwork.
- 3** Optional Wireless Remote Thermostat recommended for applications where HVAC unit serves multiple spaces with multiple solar exposures or larger spaces. Allows for averaging of temperature readings for more balanced air temperatures (maximum 8 Remote Thermostats per FS-STAT-32AC). Contact distributor or installer for assistance and recommended Part No.